



SHREE RAM
GROUP

SHREE RAM

P L A Z A

a complete shopping destination

Neemrana | Rajasthan



SHREE RAM
GROUP

SHREE RAM DEVELOPERS

Registered Office: 1, Dayal Nagar, Gopalpura Bypass, Jaipur (RAJ.)

T: 0141-2502281 | **M:** +91-96943-70000 | **E:** info@shreeramgroup.com

Branch Office: Shop No. 207, 2nd Floor, Krishna Tower, Neemrana (RAJASTHAN)

T: 0141-2763839 | **M:** +91-93148-80330

www.nmncdesigns.com

www.shreeramgroup.com



ABOUT Rajasthan

Rajasthan, popularly known as the 'land of Veers', is a state with a long history of significant Maharaja Reins. Rajasthan is the largest state of India by area and has progressed profoundly in the last few decades. The diverse culture of Rajasthan still carries the roots of the royal dynasties that ruled the state. The beautiful and strong Forts, Mahals, Palaces and other historical architecture give an idea of the rich past of the state.



ABOUT Neemrana

Located just over 120 kms from the National Capital, Neemrana falls in the Behror tehsil of Rajasthan. Due to sandy nature of the land, the region is also known as Raath. Roots of the place go down to the last hindu emperor Prithvi Raj Chauhan. Some local stories also talks of Neemrana's connection to the Yaduvanshis, descendants of Lord Krishna. Before getting its identity as the rajput state, the place was under the reign of Mughals and Jats. It was 1775 when actually the state of Alwar founded.





Neemrana is better known for its fort converted hotel. In present times the place is also known as one of the favourite weekend tourist destinations for Delhi and surrounding areas. Kesroli, a fort located near Neemrana, is one of the oldest heritage sites. Here one can see the oldest testaments of Buddhist Vihara at Virat Nagar where Pandavas took shelter for their last exile year.

A major town of Alwar district, Neemrana was ruled by the Chauhan dynasty till 1947. Neemrana was not known to many few years back but favourable government schemes have put the place on the fast lane of growth. Today Neemarana is considered to be one of the fastest growing economic region in Rajasthan and also holds a unique place in the tourism map of the state. Neemrana is a town of historical importance in the Alwar district of Rajasthan.

Due to its close proximity to national capital Delhi, Neemrana holds a huge business potential. The area is one of the most thriving business destinations of north India. During past few years Rajasthan Government has developed various industrial zones in Neemrana. Export Promotion Industrial Park and Japanese Zone in Majarkanth are some of the well-known developments of the area. Many business heavyweights like Daikin, Havells, Parle, Nissin Brake have already started the process of setting up their operations in Neemrana. Be it infrastructure, government support or proximity to many business establishments, Neemrana offers a place of its kind to all business houses. With a promise to offer best environment for business growth, Neemrana is on its way to becoming the next industrial capital of India.

SHREE RAM

PLAZA

a complete shopping destination



WHY Neemrana

The real estate business and manufacturing sector's rise in the town has caught the attention of investors from different parts of the country. Separate zones in Rajasthan Industrial Corporation (RIICO) and Export Promotion Industrial Park (EPIP) have given wings to Neemrana's overall growth. The rates of property are gradually gaining pace and this is thus, the right time to invest for individuals looking for a safe investment.



SHREE RAM
P L A Z A
a complete shopping destination



ABOUT

SHREE RAM

PLAZA

a complete shopping destination

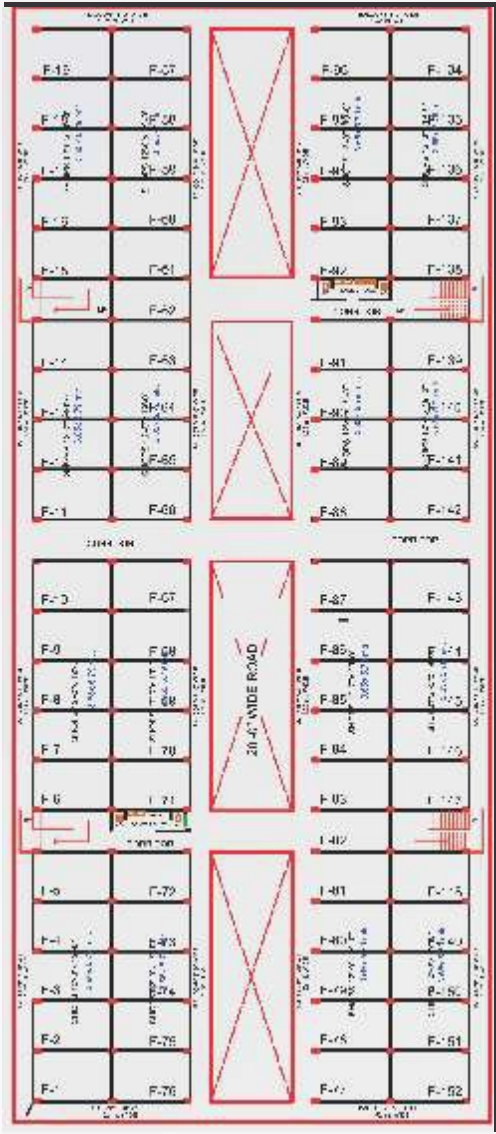
A unique concept in the town, Shree Ram Plaza is a planned open retail market with more than **300 shops** in the RIICO Industrial Area of Neemrana. Unlike other retail complexes, Shree Ram Plaza has all the outlets spread on a single floor. With so many shops under one roof, it won't take much time for Shree Ram Plaza to become the most preferred shopping destination of the area.

LAYOUT Plan

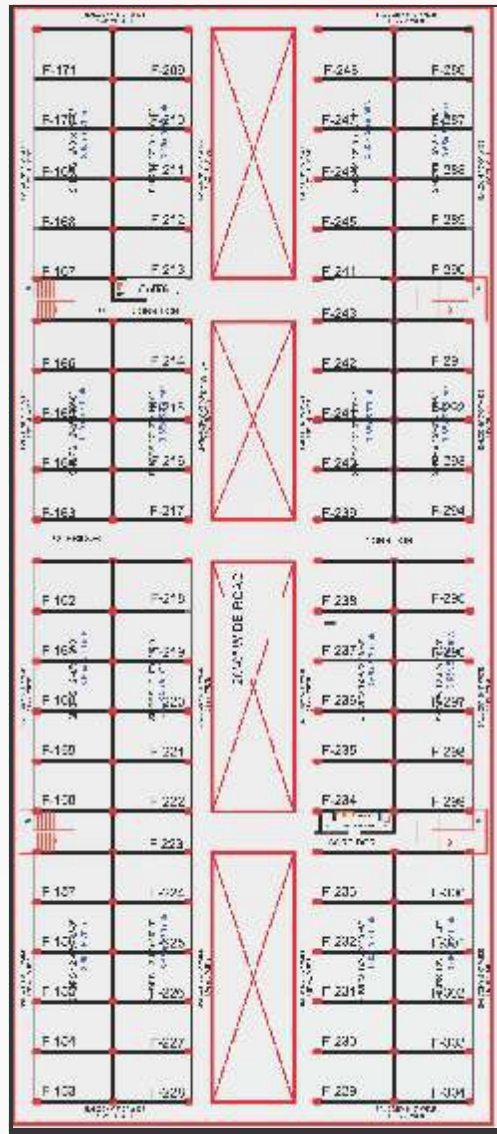


- 1. Entry
- 2. Water Fountain
- 3. Car Parking
- 4. Exit

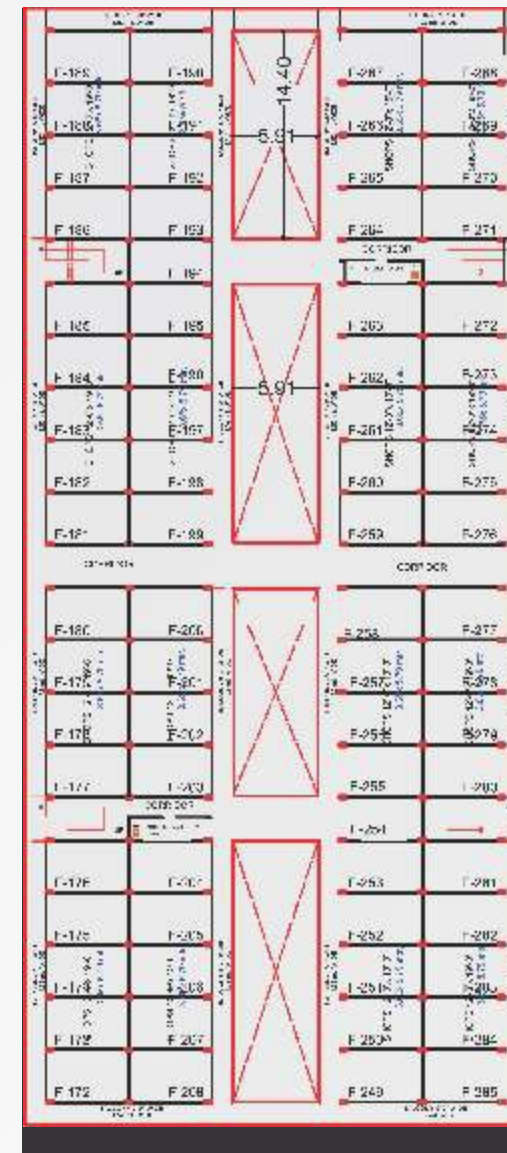
BLOCK Plan



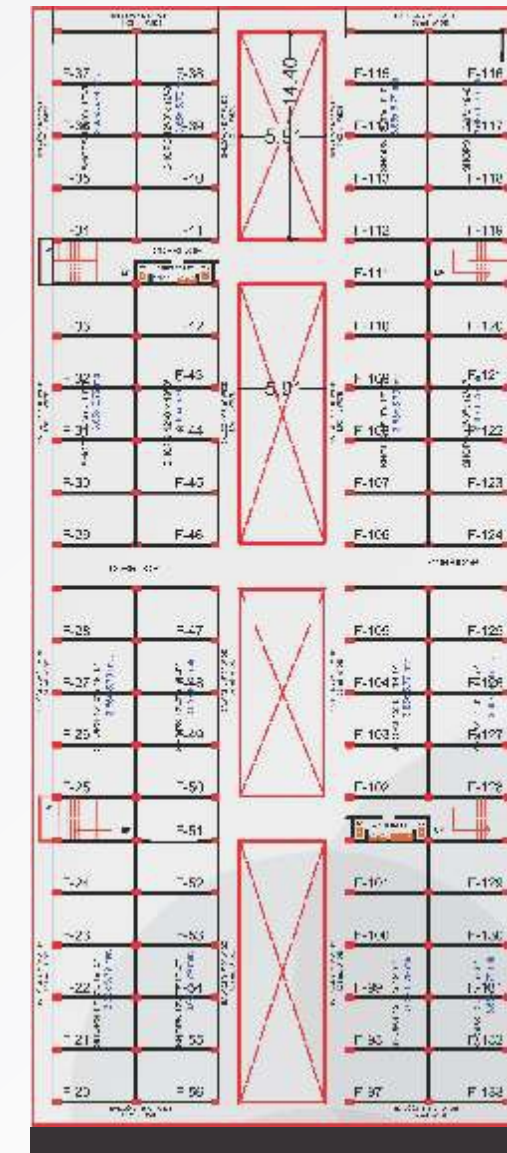
BLOCK-A



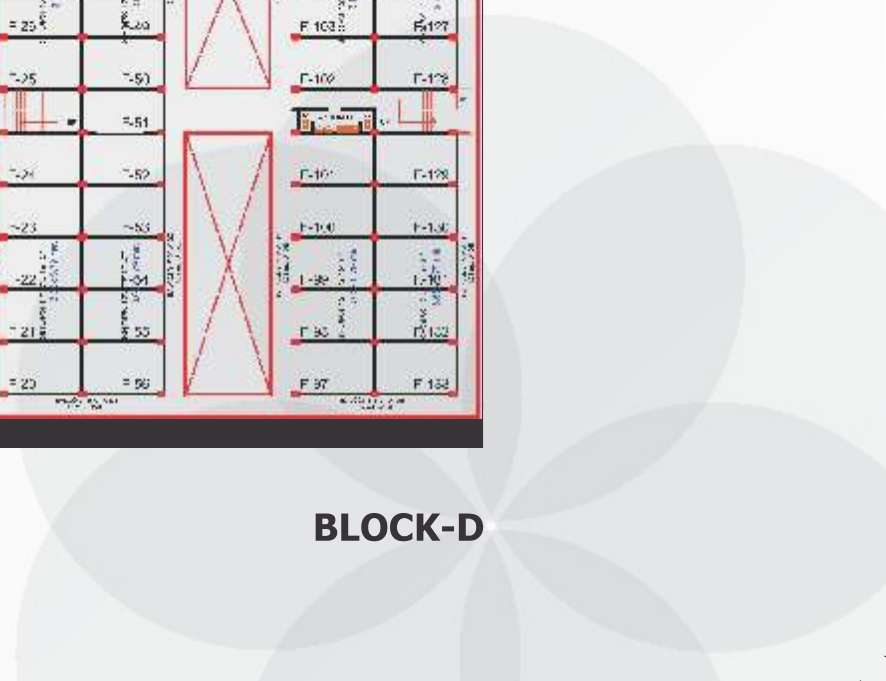
BLOCK-B



BLOCK-C



BLOCK-D





AERIAL VIEW

SHREE RAM
P L A Z A
a complete shopping destination



FRONT ELEVATION

SHREE RAM
PLAZA
a complete shopping destination



ON 30' WIDE ROAD

SHREE RAM
PLAZA
a complete shopping destination



ON 50' WIDE ROAD

SHREE RAM
P L A Z A
a complete shopping destination



SHOP CONNECTED WITH FIRST FLOOR

SHREE RAM
PLAZA
a complete shopping destination



SHOP CONNECTED WITH FIRST FLOOR

SHREE RAM
PLAZA
a complete shopping destination



ABOUT

SHREE RAM
GROUP

Originated from Jaipur, Shree Ram Group has earned an unmatched reputation by sustained good performance in quality, accuracy and customer satisfaction. Shree Ram Group is one of the oldest developer/colonizer in Jaipur having one of the largest land bank, with an opportunity to develop colonies, townships and group housings on around 3500 acres of land.

POWERED
BY DREAMS,
GOING
BEYOND BOUNDS.

FEW OF OUR ONGOING PROJECTS

Here at Shree Ram Group, we continuously work to power-up your dreams. From empty spaces to lively homes and from land to landmarks; whatever we build, we craft a lifetime of Joy.



Villas, Independent Floors
1, 2 & 3 BHK High-Rise Apartments
 Near Chokhi Dhani, Opp. Jain Temple, Maing Tonk Road, Jaipur



2/ 2.5/ 3/ 3.5 BHK
High-Rise Luxury Apartments
 Jagatpura, Jaipur



1, 2 & 3 BHK Premium Economy Apartments
 Tonk Road, Jaipur



Elite Luxury Spaces
 Near Statue Circle, Jaipur



2 & 3 BHK Ultra Premium Luxury Apartments
 C-Scheme, Jaipur

GOOGLE MAP

● ROUTE 1 ● ROUTE 2



SHREE RAM
PLAZA
 a complete shopping destination